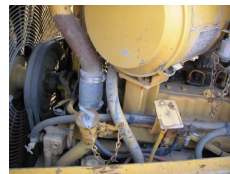
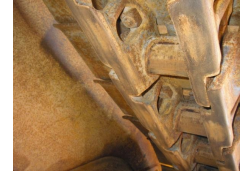




## Caterpillar D6H XL SERIES 2



**Brand**

Used equipment

Caterpillar

**Model**

D6H XL SERIES 2

**Year of manufacture**

1995

**Hours of use**

3116 h

**Manufacturing / Serial number**

9KJXXXXX

**Cabin type**

Enclosed cab

**Original colour**

Yes

**Front tyres remaining**

50 %

Air conditioning

3116 INDICATED WORKING HOURS UNDERCARRIAGE: 50% WITH E-ROPS CABIN AIRCONDITIONING DIFF STEERING BLADE WITH TILT IN ORIGINAL COLOR AND GOOD WORKING CONDITION