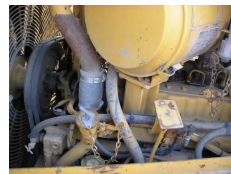




## Caterpillar D6H XL SERIES 2



Used equipment

Caterpillar

D6H XL SERIES 2

1995

3116 h

9KJXXXXX

Enclosed cab

Yes

50 %

Air conditioning

**Brand**

**Model**

**Year of manufacture**

**Hours of use**

**Manufacturing / Serial number**

**Cabin type**

**Original colour**

**Front tyres remaining**

3116 INDICATED WORKING HOURS UNDERCARRIAGE: 50% WITH E-ROPS CABIN AIRCONDITIONING DIFF STEERING BLADE WITH TILT IN ORIGINAL COLOR AND GOOD WORKING CONDITION