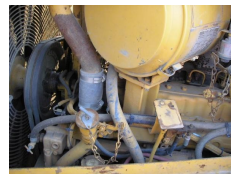
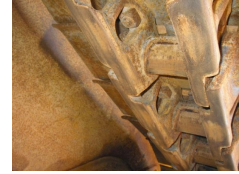




Caterpillar D6H XL SERIES 2



Brand

Used equipment

Caterpillar

Model

D6H XL SERIES 2

Year of manufacture

1995

Hours of use

3116 h

Manufacturing / Serial number

9KJXXXXX

Cabin type

Enclosed cab

Original colour

Yes

Front tyres remaining

50 %

Air conditioning

3116 INDICATED WORKING HOURS UNDERCARRIAGE: 50% WITH E-ROPS CABIN AIRCONDITIONING DIFF STEERING BLADE WITH TILT IN ORIGINAL COLOR AND GOOD WORKING CONDITION