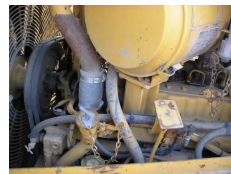




Caterpillar D6H XL SERIES 2



Used equipment

Caterpillar

D6H XL SERIES 2

1995

3116 h

9KJXXXXX

Enclosed cab

Yes

50 %

Air conditioning

Brand

Model

Year of manufacture

Hours of use

Manufacturing / Serial number

Cabin type

Original colour

Front tyres remaining

3116 INDICATED WORKING HOURS UNDERCARRIAGE: 50% WITH E-ROPS CABIN AIRCONDITIONING DIFF STEERING BLADE WITH TILT IN ORIGINAL COLOR AND GOOD WORKING CONDITION